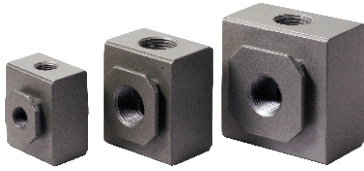


Preparation unit—G Series

GA series of gas-distribution block



Product feature

1. It is installed between G series regulator (or filter & regulator) and G series Lubricator. The air flow is divided by the device that one enters Lubricator to supply oil for lubrication and the other (the second way) directly enters the equipment.
2. Several kinds of bracket can be selected to connect regulator and lubricator. Optional brackets are type T, type L and type U.

Specification

| Model | GA200-06 | GA200-08 | GA300-08 | GA300-10 | GA400-10 | GA400-15 | GA600-20 | GA600-25 |
|-------------------|--------------------|----------|----------|----------|----------|----------|----------|----------|
| Fluid | Air | | | | | | | |
| Port size [Note1] | 1/8" | 1/4" | 1/4" | 3/8" | 3/8" | 1/2" | 3/4" | 1" |
| Way number | Four | | | | | | | |
| Pressure range | 0~1.0MPa(0~145psi) | | | | | | | |
| Proof pressure | 1.5MPa(215psi) | | | | | | | |
| Temperature range | -20~70°C | | | | | | | |

[Note1] G thread is available.

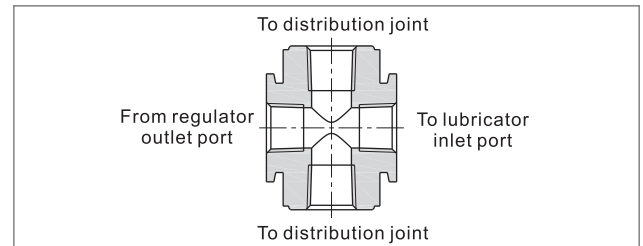
Ordering code

GA200 08 G

① ② ③

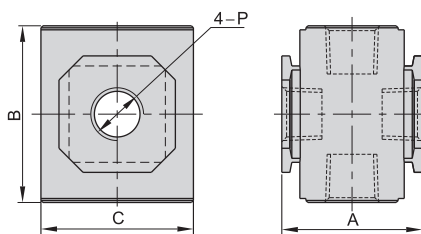
| ① Model | ② Port size | ③ Thread type |
|---|----------------------------------|---------------|
| GA200: 200 Series gas-distribution block | 06: 1/8" 08: 1/4" | G: G |
| GA300: 300 Series gas-distribution block | 08: 1/4" 10: 3/8" 15: 1/2" | |
| GA400: 400 Series gas-distribution block | 10: 3/8" 15: 1/2" | |
| GA600: 600 Series gas-distribution block | 20: 3/4" 25: 1" | |

Inner structure



Note : When it is used with F.R.L. combination, extra mounting bracket needed. Please refer to P178 for order detail.

Dimensions



| Model\Item | A | B | C | P | |
|------------|----|------|----|----|------|
| GA200 | 06 | 28.5 | 36 | 30 | 1/8" |
| | 08 | 28.5 | 36 | 30 | 1/4" |
| GA300 | 08 | 35 | 44 | 38 | 1/4" |
| | 10 | 35 | 44 | 38 | 3/8" |
| GA400 | 10 | 42 | 52 | 52 | 3/8" |
| | 15 | 42 | 52 | 52 | 1/2" |
| GA600 | 20 | 60 | 76 | 68 | 3/4" |
| | 25 | 60 | 76 | 68 | 1" |