

# SUS316全不銹鋼接頭

LPN、LPE、LPU、LPV、LPL、LPC、LPB系列



## 成品訂購碼

X - S6 - LPN 10 X 8

X - S6 - LPL 10 X 8 02



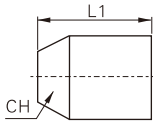
①規格代號	LPN	LPE	LPU	LPV	LPL	LPC	LPB
②接管口徑 I	6: Φ6mm			8: Φ8mm		10: Φ10mm 12: Φ12mm	
③接管口徑 II	4: Φ4mm			6: Φ6mm		8: Φ8mm 10: Φ10mm	
④連接螺紋	無此代碼			M5: M5X0.8		01: 1/8" 02: 1/4" 03: 3/8" 04: 1/2"	

## 接管口徑與連接端螺紋配置表

產品	接管口徑 II	接管口徑 I				產品系列	連接螺紋	接管口徑 I x 接管口徑 II			
		6	8	10	12			6x4	8x6	10x8	12x10
LPN、LPE LPU、LPV	4	●				LPL LPC LPB	M5	●			
	6		●				1/8"	●	●	●	●
	8			●			1/4"	●	●	●	●
	10				●		3/8"		●	●	●
						1/2"			●	●	

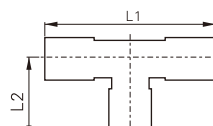
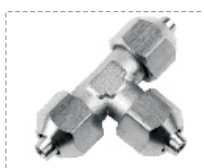
## 外部規格

### LPN系列



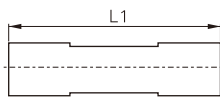
型號符號	螺紋	CH	L1
X-S6-LPN6X4	M10×1	12	10
X-S6-LPN8X6	M12×1	14	10
X-S6-LPN10X8	M14×1	16	13
X-S6-LPN12X10	M16×1	19	13.5

### LPE系列



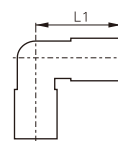
型號符號	L1	L2
X-S6-LPE6X4	48	24
X-S6-LPE8X6	54	27
X-S6-LPE10X8	61	30.5
X-S6-LPE12X10	68	34

### LPU系列



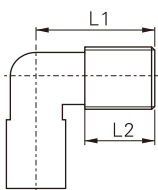
型號符號	L1
X-S6-LPU6X4	34
X-S6-LPU8X6	35
X-S6-LPU10X8	39
X-S6-LPU12X10	43

### LPV系列



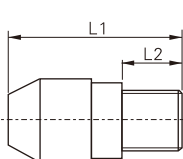
型號符號	L1
X-S6-LPV6X4	24
X-S6-LPV8X6	27
X-S6-LPV10X8	30
X-S6-LPV12X10	34

### LPL系列



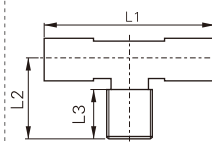
型號符號	L1	L2
X-S6-LPL6X4M5	24	4
X-S6-LPL6X401	24	7.5
X-S6-LPL6X402	24	9.5
X-S6-LPL8X601	27	7.5
X-S6-LPL8X602	27	9.5
X-S6-LPL8X603	27	10.5
X-S6-LPL10X801	30	7.5
X-S6-LPL10X802	30	9.5
X-S6-LPL10X803	30	10.5
X-S6-LPL10X804	30	12.5
X-S6-LPL12X1001	34	7.5
X-S6-LPL12X1002	34	9.5
X-S6-LPL12X1003	34	10.5
X-S6-LPL12X1004	34	12.5

### LPC系列



型號符號	L1	L2
X-S6-LPC6X4M5	23	4
X-S6-LPC6X401	26	7.5
X-S6-LPC6X402	28	9.5
X-S6-LPC8X601	26.5	7.5
X-S6-LPC8X602	28.5	9.5
X-S6-LPC8X603	30.5	10.5
X-S6-LPC10X801	30.5	7.5
X-S6-LPC10X802	32.5	9.5
X-S6-LPC10X803	33.5	10.5
X-S6-LPC10X804	35.5	12.5
X-S6-LPC12X1001	35.5	7.5
X-S6-LPC12X1002	37.5	9.5
X-S6-LPC12X1003	38.5	10.5
X-S6-LPC12X1004	40.5	12.5

### LPB系列



型號符號	L1	L2	L3
X-S6-LPB6X4M5	48	20	4
X-S6-LPB6X401	48	24	7.5
X-S6-LPB6X402	48	26	9.5
X-S6-LPB8X601	54	27	7.5
X-S6-LPB8X602	54	29	9.5
X-S6-LPB8X603	54	31	10.5
X-S6-LPB10X801	61	28	7.5
X-S6-LPB10X802	61	30	9.5
X-S6-LPB10X803	61	32	10.5
X-S6-LPB10X804	61	35	12.5
X-S6-LPB12X1001	68	30	7.5
X-S6-LPB12X1002	68	32	9.5
X-S6-LPB12X1003	68	33	10.5
X-S6-LPB12X1004	68	34	12.5

# SUS316全不銹鋼接頭

PC、PCF、POC、PH、PL、PEB、PLF、PSA系列



## 成品訂購碼

X - S6 - PC 10 02



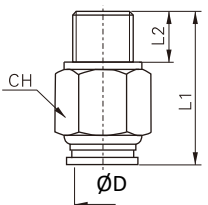
① 規格代號	PC	PCF	POC	PH	PL	PEB	PLF	PSA
② 接管口徑	4: Φ4mm	6: Φ6mm	8: Φ8mm	10: Φ10mm	12: Φ12mm	14: Φ14mm	16: Φ16mm	
③ 連接螺紋	M5: M5X0.8    01: 1/8"    02: 1/4"    03: 3/8"    04: 1/2"							

## 接管口徑與連接端螺紋配置表

產品系列	連接螺紋	接管口徑						
		4	6	8	10	12	14	16
PC	M5	●	●					
PCF	1/8"	●	●	●				
POC	1/4"	●	●	●	●	●		
PL	3/8"		●	●	●	●	●	●
PEB	1/2"		●	●	●	●	●	●
PLF	1/2"		●	●	●	●	●	●
PH	M5							
	1/8"	●	●	●				
	1/4"	●	●	●	●	●		
	3/8"		●	●	●	●		
	1/2"			●	●	●		
PSA	M5	●	●					
	1/8"	●	●	●				
	1/4"	●	●	●	●	●		
	3/8"			●	●	●		
	1/2"			●	●	●		

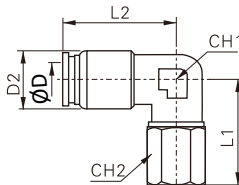
## 外部規格

### PC系列



型號符號	管徑	L1	L2	CH
X-S6-PC4M5	4	20.2	4	10
X-S6-PC401	4	21.2	7.5	10
X-S6-PC402	4	21	9.5	14
X-S6-PC6M5	6	20.6	4	12
X-S6-PC601	6	21.6	7.5	12
X-S6-PC602	6	21	9.5	14
X-S6-PC603	6	22	10.5	17
X-S6-PC604	6	24	12.5	21
X-S6-PC801	8	25	7.5	14
X-S6-PC802	8	24.5	9.5	14
X-S6-PC803	8	22.5	10.5	17
X-S6-PC804	8	24	12.5	21
X-S6-PC1002	10	28.5	9.5	17
X-S6-PC1003	10	27	10.5	17
X-S6-PC1004	10	25	12.5	21
X-S6-PC1202	12	31.3	9.5	21
X-S6-PC1203	12	29.5	10.5	21
X-S6-PC1204	12	31.3	12.5	21
X-S6-PC1403	14	33	10.5	22
X-S6-PC1404	14	33	12.5	22
X-S6-PC1603	16	34	10.5	24
X-S6-PC1604	16	33	12.5	24

### PLF系列

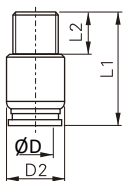


型號符號	管徑	L1	L2	D2	CH1	CH2
X-S6-PLF4M5	4	25.5	23	10.5	9.2	12
X-S6-PLF401	4	27.5	23	10.5	9.2	14
X-S6-PLF402	4	29.5	23	10.5	9.2	17
X-S6-PLF6M5	6	25	24	12.5	9.2	12
X-S6-PLF601	6	27	24	12.5	9.2	14
X-S6-PLF602	6	28	24	12.5	9.2	17
X-S6-PLF603	6	30	24	12.5	9.2	21
X-S6-PLF604	6	25	24	12.5	9.2	24
X-S6-PLF801	8	27	27	14.5	11.2	14
X-S6-PLF802	8	28	27	14.5	11.2	17
X-S6-PLF803	8	30	27	14.5	11.2	21
X-S6-PLF804	8	28	27	14.5	11.2	24
X-S6-PLF1002	10	29	30.5	17.5	13.2	17
X-S6-PLF1003	10	31	30.5	17.5	13.2	21
X-S6-PLF1004	10	30.5	30.5	17.5	13.2	24
X-S6-PLF1202	12	31.5	34	20.5	15.5	17
X-S6-PLF1203	12	33.5	34	20.5	15.5	21
X-S6-PLF1204	12	32	34	20.5	15.5	24
X-S6-PLF1403	14	35	37	22	20.6	21
X-S6-PLF1404	14	32	37	22	20.6	24
X-S6-PLF1603	16	35	38	24	20.6	21
X-S6-PLF1604	16	38	38	24	20.6	24

# SUS316全不銹鋼接頭

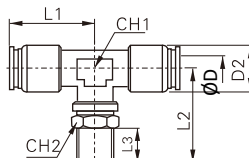
## PC、PCF、POC、PH、PL、PEB、PLF、PSA系列

### POC系列



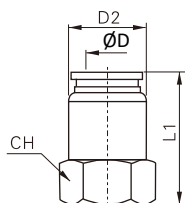
型號符號	管徑	L2	D2	L1
X-S6-POC4M5	4	4	10.5	20.2
X-S6-POC401	4	7.5	10.5	21.2
X-S6-POC402	4	9.5	10.5	21
X-S6-POC6M5	6	4	12.5	20.6
X-S6-POC601	6	7.5	12.5	21.6
X-S6-POC602	6	9.5	12.5	21
X-S6-POC603	6	10.5	12.5	22
X-S6-POC604	6	12.5	12.5	24
X-S6-POC801	8	7.5	14.5	25
X-S6-POC802	8	9.5	14.5	24.5
X-S6-POC803	8	10.5	14.5	22.5
X-S6-POC804	8	12.5	14.5	24
X-S6-POC1002	10	9.5	17.5	28.5
X-S6-POC1003	10	10.5	17.5	27
X-S6-POC1004	10	12.5	17.5	25
X-S6-POC1202	12	9.5	20.5	31.3
X-S6-POC1203	12	10.5	20.5	29.5
X-S6-POC1204	12	12.5	20.5	31.3
X-S6-POC1403	14	10.5	22	33
X-S6-POC1404	14	12.5	22	33
X-S6-POC1603	16	10.5	24	34
X-S6-POC1604	16	12.5	24	33

### PEB系列



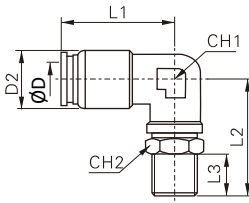
型號符號	管徑	L1	L2	L3	D2	CH1	CH2
X-S6-PEB4M5	4	23	25.5	4	10.5	9.2	12
X-S6-PEB401	4	23	27.5	7.5	10.5	9.2	12
X-S6-PEB402	4	23	29.5	9.5	10.5	9.2	14
X-S6-PEB6M5	6	24	25	4	12.5	9.2	12
X-S6-PEB601	6	24	25	7.5	12.5	9.2	12
X-S6-PEB602	6	24	27	9.5	12.5	9.2	14
X-S6-PEB603	6	24	28	10.5	12.5	9.2	17
X-S6-PEB604	6	24	30	12.5	12.5	9.2	21
X-S6-PEB801	8	27	25	7.5	14.5	11.2	12
X-S6-PEB802	8	27	27	9.5	14.5	11.2	14
X-S6-PEB803	8	27	28	10.5	14.5	11.2	17
X-S6-PEB804	8	27	30	12.5	14.5	11.2	21
X-S6-PEB1002	10	30.5	28	9.5	17.5	13.2	14
X-S6-PEB1003	10	30.5	29	10.5	17.5	13.2	17
X-S6-PEB1004	10	30.5	31	12.5	17.5	13.2	21
X-S6-PEB1202	12	34	30.5	9.5	20.5	15.5	14
X-S6-PEB1203	12	34	31.5	10.5	20.5	15.5	17
X-S6-PEB1204	12	34	33.5	12.5	20.5	15.5	21
X-S6-PEB1403	14	37	33	10.5	22	20.6	17
X-S6-PEB1404	14	37	35	12.5	22	20.6	21
X-S6-PEB1603	16	38	33	10.5	24	20.6	17
X-S6-PEB1604	16	38	35	12.5	24	20.6	21

### PCF系列



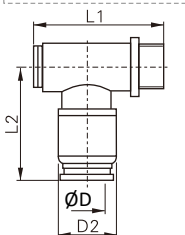
型號符號	管徑	L1	D2	CH
X-S6-PCF4M5	4	20.2	10.5	10
X-S6-PCF401	4	21.2	10.5	14
X-S6-PCF402	4	21	10.5	17
X-S6-PCF6M5	6	20.6	12.5	12
X-S6-PCF601	6	21.6	12.5	14
X-S6-PCF602	6	21	12.5	17
X-S6-PCF603	6	22	12.5	21
X-S6-PCF604	6	24	12.5	24
X-S6-PCF801	8	25	14.5	14
X-S6-PCF802	8	24.5	14.5	17
X-S6-PCF803	8	22.5	14.5	21
X-S6-PCF804	8	24	14.5	24
X-S6-PCF1002	10	28.5	17.5	17
X-S6-PCF1003	10	27	17.5	21
X-S6-PCF1004	10	25	17.5	24
X-S6-PCF1202	12	31.3	20.5	21
X-S6-PCF1203	12	29.5	20.5	21
X-S6-PCF1204	12	31.3	20.5	24
X-S6-PCF1403	14	33	22	22
X-S6-PCF1404	14	33	22	24
X-S6-PCF1603	16	34	24	24
X-S6-PCF1604	16	33	24	24

### PL系列



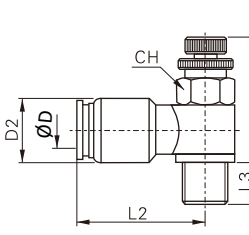
型號符號	管徑	L1	L2	L3	D2	CH1	CH2
X-S6-PL4M5	4	23	25.5	4	10.5	9.2	12
X-S6-PL401	4	23	27.5	7.5	10.5	9.2	12
X-S6-PL402	4	23	29.5	9.5	10.5	9.2	14
X-S6-PL6M5	6	24	25	4	12.5	9.2	12
X-S6-PL601	6	24	25	7.5	12.5	9.2	12
X-S6-PL602	6	24	27	9.5	12.5	9.2	14
X-S6-PL603	6	24	28	10.5	12.5	9.2	17
X-S6-PL604	6	24	30	12.5	12.5	9.2	21
X-S6-PL801	8	27	25	7.5	14.5	11.2	12
X-S6-PL802	8	27	27	9.5	14.5	11.2	14
X-S6-PL803	8	27	28	10.5	14.5	11.2	17
X-S6-PL804	8	27	30	12.5	14.5	11.2	21
X-S6-PL1002	10	30.5	28	9.5	17.5	13.2	14
X-S6-PL1003	10	30.5	29	10.5	17.5	13.2	17
X-S6-PL1004	10	30.5	31	12.5	17.5	13.2	21
X-S6-PL1202	12	34	30.5	9.5	20.5	15.5	14
X-S6-PL1203	12	34	31.5	10.5	20.5	15.5	17
X-S6-PL1204	12	34	33.5	12.5	20.5	15.5	21
X-S6-PL1403	14	37	33	10.5	22	20.6	17
X-S6-PL1404	14	37	35	12.5	22	20.6	21
X-S6-PL1603	16	38	33	10.5	24	20.6	17
X-S6-PL1604	16	38	35	12.5	24	20.6	21

### PH系列



型號符號	管徑	L1	L2	D2
X-S6-PH401	4	34.5	28	10.5
X-S6-PH402	4	43	28	10.5
X-S6-PH601	6	34.5	28	12.5
X-S6-PH602	6	43	28	12.5
X-S6-PH801	8	34.5	30	14.5
X-S6-PH802	8	43	30	14.5
X-S6-PH803	8	47.3	33	14.5
X-S6-PH804	8	51	33	14.5
X-S6-PH1002	10	43	32.5	17.5
X-S6-PH1003	10	47.3	35	17.5
X-S6-PH1004	10	51	35	17.5
X-S6-PH1202	12	43	36	20.5
X-S6-PH1203	12	47.3	38	20.5
X-S6-PH1204	12	51	38	20.5

### PSA系列



型號符號	管徑	L1	L2	L3	D2	CH
X-S6-PSA4M5	4	30.5	23.5	4	10.5	8
X-S6-PSA401	4	34.5	28	7.5	10.5	12
X-S6-PSA402	4	43	28	9.5	10.5	14
X-S6-PSA6M5	6	30.5	24.5	4	12.5	8
X-S6-PSA601	6	34.5	28	7.5	12.5	12
X-S6-PSA602	6	43	28	9.5	12.5	14
X-S6-PSA801	8	34.5	30	7.5	14.5	12
X-S6-PSA802	8	43	30	9.5	14.5	14
X-S6-PSA803	8	47.3	33	10.5	14.5	19
X-S6-PSA804	8	51	33	12.5	14.5	22
X-S6-PSA1002	10	43	32.5	9.5	17.5	14
X-S6-PSA1003	10	47.3	35	10.5	17.5	19
X-S6-PSA1004	10	51	35	12.5	17.5	22
X-S6-PSA1202	12	43	36	9.5	20.5	14
X-S6-PSA1203	12	47.3	38	10.5	20.5	19
X-S6-PSA1204	12	51	38	12.5	20.5	22

# SUS316全不銹鋼接頭

PE、PV、PY、PM、PU、PP、PGJ、PEG、PYW、PG系列



## 成品訂購碼

**X - S6 - PE 10** 同徑類

**X - S6 - PEG 10 - 8** 變徑類

① ② ③

①規格代號	PE	PV	PY	PM	PU	PP	PGJ	PEG	PYW	PG
②接管口徑 I	4: Φ4mm 6: Φ6mm		8: Φ8mm 10: Φ10mm		12: Φ12mm 14: Φ14mm		16: Φ16mm		6: Φ6mm 8: Φ8mm 10: Φ10mm 12: Φ12mm 14: Φ14mm 16: Φ16mm	
③接管口徑 II	無此代碼						4: Φ4mm 6: Φ6mm 8: Φ8mm 10: Φ10mm 12: Φ12mm 14: Φ14mm			

## 接管口徑配置表

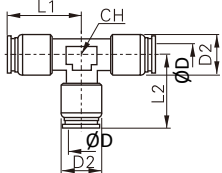
產品	接管口徑 I							產品系列	接管口徑 II	接管口徑 I							
	4	6	8	10	12	14	16			6	8	10	12	14	16		
PE、PV PM、PU PP	●	●	●	●	●	●	●	PGJ PEG PG	4	●	●						
PY	●	●	●	●	●				6		●						
									8			●	●				
									10				●	●			
									12					●	●		
									14							●	
								16								●	
								PYW	4	●	●						
									6		●	●					
									8			●	●				
									10				●				
									12					●			
								14									

## 外部規格

### PE系列



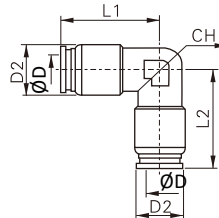
型號符號	管徑	L1	L2	D2	CH
X-S6-PE4	4	23	23	10.5	9.2
X-S6-PE6	6	24	24	12.5	9.2
X-S6-PE8	8	27	27	14.5	11.2
X-S6-PE10	10	30.5	30.5	17.5	13.2
X-S6-PE12	12	34	34	20.5	15.5
X-S6-PE14	14	37	37	22	20.6
X-S6-PE16	16	38	38	24	20.6



### PV系列



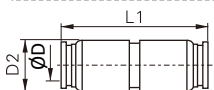
型號符號	管徑	L1	L2	D2	CH
X-S6-PV4	4	23	23	10.5	9.2
X-S6-PV6	6	24	24	12.5	9.2
X-S6-PV8	8	27	27	14.5	11.2
X-S6-PV10	10	30.5	30.5	17.5	13.2
X-S6-PV12	12	34	34	20.5	15.5
X-S6-PV14	14	37	37	22	20.6
X-S6-PV16	16	38	38	24	20.6



### PU系列



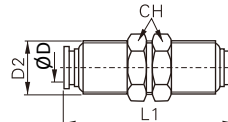
型號符號	管徑	L1	D2
X-S6-PU4	4	30	10.5
X-S6-PU6	6	32	12.5
X-S6-PU8	8	34	14.5
X-S6-PU10	10	36	17.5
X-S6-PU12	12	41	20.5
X-S6-PU14	14	42	22
X-S6-PU16	16	47.6	24



### PM系列



型號符號	管徑	L1	D2	CH
X-S6-PM4	4	30	12	14
X-S6-PM6	6	32	14	17
X-S6-PM8	8	34	16	19
X-S6-PM10	10	36	19	22
X-S6-PM12	12	41	22	24
X-S6-PM14	14	42	24	27
X-S6-PM16	16	47.6	26	29



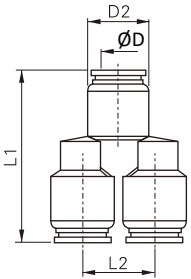
# SUS316全不銹鋼接頭

## PE、PV、PY、PM、PU、PP、PGJ、PEG、PYW、PG系列

### PY系列



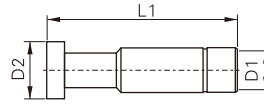
型號符號	管徑	L1	L2	D2
X-S6-PY4	4	35	13	11
X-S6-PY6	6	37.5	16	13
X-S6-PY8	8	41.3	18	15
X-S6-PY10	10	44.3	21	18
X-S6-PY12	12	51	24	21



### PP系列



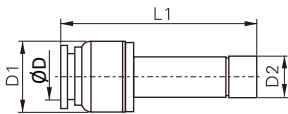
型號符號	D1	D2	L1
X-S6-PP4	6	4	28
X-S6-PP6	8	6	33
X-S6-PP8	10	8	37
X-S6-PP10	12	10	42
X-S6-PP12	14	12	44
X-S6-PP14	16	14	46
X-S6-PP16	18	16	49



### PGJ系列



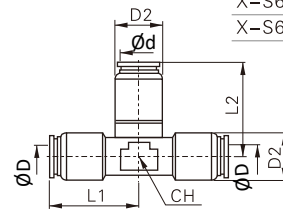
型號符號	管徑	D1	D2	L1
X-S6-PGJ6-4	4	10.5	6	41
X-S6-PGJ8-6	6	12.5	8	44
X-S6-PGJ8-4	4	10.5	8	43
X-S6-PGJ10-8	8	14.5	10	47
X-S6-PGJ10-6	6	12.5	10	47
X-S6-PGJ12-8	8	14.5	12	52
X-S6-PGJ12-10	10	17.5	12	53
X-S6-PGJ14-12	12	20.5	14	56
X-S6-PGJ14-10	10	17.5	14	56
X-S6-PGJ16-14	14	22	16	58
X-S6-PGJ16-12	12	20.5	16	58



### PEG系列



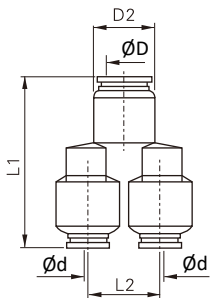
型號符號	管徑I	管徑II	L1	D1	D2	CH
X-S6-PEG6-4	4	6	24	10.5	12.5	9.2
X-S6-PEG8-4	4	8	27	10.5	14.5	11.2
X-S6-PEG8-6	6	8	27	12.5	14.5	11.2
X-S6-PEG10-6	6	10	30.5	12.5	17.5	13.2
X-S6-PEG10-8	8	10	30.5	14.5	17.5	13.2
X-S6-PEG12-8	8	12	34	14.5	20.5	15.5
X-S6-PEG12-10	10	12	34	17.5	20.5	15.5
X-S6-PEG14-10	10	14	37	17.5	22	20.6
X-S6-PEG14-12	12	14	37	20.5	22	20.6
X-S6-PEG16-12	12	16	38	20.5	24	20.6
X-S6-PEG16-14	14	16	38	22	24	20.6



### PYW系列



型號符號	管徑I	管徑II	L1	L2	D1
X-S6-PYW6-4	6	4	37.5	16	13
X-S6-PYW8-4	8	4	41.3	18	15
X-S6-PYW8-6	8	6	41.3	18	15
X-S6-PYW10-6	10	6	44.3	21	18
X-S6-PYW10-8	10	8	44.3	21	18
X-S6-PYW12-8	12	8	51	24	21
X-S6-PYW12-10	12	10	51	24	21



### PG系列



型號符號	管徑I	管徑II	D1	D2	L1
X-S6-PG6-4	4	6	10.5	12.5	30.6
X-S6-PG8-4	4	8	10.5	14.5	31.6
X-S6-PG8-6	6	8	12.5	14.5	32.8
X-S6-PG10-6	6	10	12.5	17.5	34
X-S6-PG10-8	8	10	14.5	17.5	35
X-S6-PG12-8	8	12	14.5	20.5	37
X-S6-PG12-10	10	12	17.5	20.5	38.2
X-S6-PG14-10	10	14	17.5	22	39
X-S6-PG14-12	12	14	20.5	22	42
X-S6-PG16-12	12	16	20.5	24	43
X-S6-PG16-14	14	16	22	24	44

